



AXIAL FAN  
OPERATING MANUAL

[www.vlano.de](http://www.vlano.de)



100VAIR

**VLANO** Vent

## CONTENT

Scope of delivery .....	6
Brief description .....	6
Operating rules .....	6
Designation key .....	7
Assembly .....	7
Setting the fan .....	8th
Maintenance .....	9
Storage and transport regulations .....	9
Manufacturer's guarantee .....	10

These operating instructions are the most important document for operation and are aimed at specialist and maintenance staff as well as operating personnel. The operating instructions contain information on the intended use, technical data, mode of operation and installation of the 100 Style device and all its modifications.

Skilled and maintenance personnel should have completed training in the area of ventilation and must carry out the work in accordance with the applicable local work safety regulations, building codes and standards. The information given in these operating instructions is believed to be correct at the time this document was written. In order to implement current technical developments, the company reserves the right to make changes to the design, technical properties and scope of delivery of the device at any time. No part of this publication may be reproduced, transmitted, stored in an information search system, or translated into any other language in any way without the prior written consent of the company.

**READ THESE OPERATING INSTRUCTIONS BEFORE INSTALLING THE DEVICE**

**CAREFULLY THROUGH.**



**COMPLIANCE WITH THE OPERATING INSTRUCTIONS ENSURES SAFE OPERATION OF THE  
DEVICE DURING THE ENTIRE LIFE OF USE.**

**KEEP THESE OPERATING INSTRUCTIONS AS LONG AS YOU USE THE DEVICE  
OPERATE AS THIS CONTAINS ALL MAINTENANCE INSTRUCTIONS.**



**MEET THE PRESENT OPERATING REQUIREMENTS,  
FOR PROPER FUNCTION AND LONG SERVICE LIFE OF THE FAN  
TO ENSURE.**

The device must be disconnected from the power supply before all connection, adjustment, maintenance and repair work.

**Service and maintenance work must only be carried out by qualified personnel who have a valid license for electrical work on electrical systems up to 1000V.**

**Read the operating instructions before starting any work on the device.**

The single-phase network to which the device is connected must comply with the applicable electrical standards.

The cabling system must have a circuit breaker.

The electrical connection is made via a circuit breaker QF, which is integrated in the stationary line. The contact distance must be at least 3 mm at all poles.

Before installing the device, check it for visible defects on the impeller, housing and grille. Furthermore, it must be ensured that there are no foreign bodies in the housing that could damage the impeller blades.

During assembly, make sure that the housing is not deformed! Deformation of the housing can cause the motor to stall and loud noises.

Improper use, unauthorized changes and reworking as well as modifications to the device are prohibited.

Take precautions to ensure that smoke, carbon oxide gases and other flammable substances cannot enter the room through open smoke vents or other fire protection devices. Around

To avoid a back pressure of air and at the same time to ensure proper combustion of flue gases and gases through the chimney, care must be taken to ensure an adequate air supply. The conveying air must not contain any dust, vapors, solid foreign matter, sticky substances or fibers.

The device is not designed for use in a flammable or explosive environment that contains, for example, alcohol fumes, gasoline or insecticides.

Do not close or cover the air inlet and outlet openings in order to ensure an optimal air flow.

Please do not sit on the device or leave any objects on it.

This device may only be used by children from the age of 8 and persons with limited physical, mental or sensory abilities or without sufficient experience and knowledge if they have been supervised or have been instructed in the safe use of the device and have understood the resulting dangers. Do not let children play with the device.



**AFTER ITS SERVICE LIFE, THE DEVICE MUST BE DISPOSED OF SEPARATELY.  
THE DEVICE MUST NOT BE DISPOSED OF AS UNSORTED URBAN WASTE.**

### **SCOPE OF DELIVERY**

Fan: 1 pc.

Screws and dowels: 4 pcs.

Plastic screwdriver (only for models with timer): 1 pc.

Operating instructions: 1 pc.

Packaging box: 1 pc.

### **SHORT DESCRIPTION**

The product described in the operating instructions is an axial fan for ventilating small to medium-sized living spaces that are heated in winter.

The device is compatible with pipe systems with a diameter of 100 mm.

The integrated non-return flap prevents return flow when the fan is at a standstill.

### **OPERATING INSTRUCTIONS**

The fan is designed for connection to a single-phase alternating current network. The parameters of the power supply are indicated on the packaging and / or the housing.

The direction of air flow in the system is indicated by an arrow on the fan housing. Degree of protection against ingress of foreign bodies and water ingress: IP 45.

The fan is designed for use in ambient temperatures from +1 ° C to +45 ° C. The device belongs to the electrical systems of class II and does not have to be earthed.

## DESIGNATION KEY

**100 VAIR duo X (220-240V / 60 Hz)**

### Power supply

\_ : 220-240 V / 50 Hz

220-240 V / 60 Hz: power supply 220-240 V, frequency 60 Hz

### Motor type: Additional options:

\_ : Basic version (switching on and off)

T: switch-on delay, run-on switch and interval timer TH:  
switch-on delay, run-on switch and humidity sensor

### Engine type:

Duo: two-stage motor

### Discharge nozzle diameter, mm

## ASSEMBLY

The fan is designed for wall or ceiling mounting and connection to a ventilation duct or a ventilation pipe of compatible diameter (Fig. 2).

**Step 1.** Disconnect the device from the power supply and ensure that the power is switched off (Fig. 3).

**Step 2.** Route the power cable to the ventilation opening (Fig. 4).

**Step 3.** Remove the design cover from the fan. Then remove the fan cover (Fig. 5).

**Step 4.** Mark and drill the mounting holes and mount the fan (Fig. 6-8).

**Step 5.** Connect the fan to the power supply in accordance with the connection diagram (Fig. 12-13).

**Step 6.** Put the cover back on the terminal strip (Fig. 9) and the design cover (Fig. 10) back on the fan housing.

**Step 7.** Reconnect the power supply to the fan (Fig. 11).

### Designations of the terminals on the connection diagrams:


L: phase


N: zero


S: external switch

QF: Circuit breaker

## ADJUSTING THE FAN

 **H**: Turn the rotary knob of the potentiometer to adjust the humidity setpoint **H** clockwise to increase the switch-on humidity and counterclockwise to reduce it accordingly (from 60% to 90%).

 **T<sub>i</sub>**: Switching on and setting the interval timer is done with the potentiometer **T<sub>i</sub>**. To switch off the interval timer adjust the potentiometer **T<sub>i</sub>** in the far left position. Turning the potentiometer 1/3 clockwise sets the duration of interval operation to 6 hours, turning it 2/3 to 12 hours and turning it to rightmost position on 24 hours.

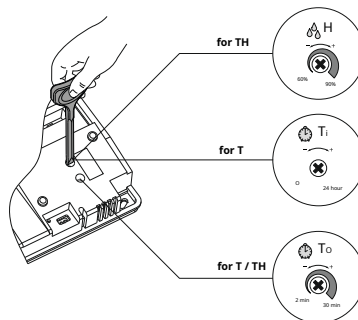
 **T<sub>off</sub>**: To set the delay time, turn the rotary knob of the potentiometer **T<sub>off</sub>** clockwise to increase the delay time and counterclockwise to reduce it accordingly (from 2 to 30 minutes).

**Caution: If the switch switches off again within 60 seconds after the switch or the humidity sensor has been triggered or the room humidity falls below the setpoint, the fan continues to run at the low ventilation level.**



**DO NOT USE METAL SCREWDRIVERS, KNIVES, OR OTHER SHARP OBJECTS TO DAMAGE THE CONTROL BOARD.**

A plastic screwdriver for setting the fan parameters is included in the scope of delivery. Use this to set the switch-on duration, follow-up time or switch-on humidity.





## MAINTENANCE

Maintenance work on the fan must be carried out after 6 months at the latest.

Maintenance steps:

- Disconnect the fan from the power supply and ensure that the power is switched off (Fig. 14).
- Remove the front cover and clean the fan with a soft cloth or brush (Fig. 15).
- Rinse the cover under running water (Fig. 16).
- Wipe the surfaces of the fan dry.
- Put the cover back on the fan.
- Connect the power supply (Fig. 17).

**WARNING! The electrical components must be protected from splashing water!**

## STORAGE AND TRANSPORT REGULATIONS

- Store the device in the original packaging in a ventilated room at a temperature of +5 ° C to + 40 ° C and a relative humidity of max. 70%.
- Vapors and foreign substances in the air, which can cause corrosion and damage connection seals, are not permitted.
- Use lifting gear during cargo handling work to prevent possible damage.
- The transport requirements for this type of cargo must be met.
- The transport with vehicles of any kind must be carried out under constant protection from harmful mechanical and weather-related influences. Only transport the device in the operating position.
- Carry out loading and unloading work carefully, protect against impacts.
- Before using the device for the first time after transporting it at low temperatures, it must be kept at room temperature for at least 3-4 hours.

## MANUFACTURER'S WARRANTY

The product complies with European norms and standards, the directives on low voltage and electromagnetic compatibility. We hereby declare that the product complies with the relevant requirements of directive 2014/30 / EU on electromagnetic compatibility, low-voltage directive 2014/35 / EU and directive 93/68 / EEC on CE marking.

This certificate is issued for the above after testing the product.

The manufacturer sets a guarantee period of 24 months from the date of sale through retailers, provided that the consumer fulfills the regulations for transport, storage, assembly and operation.

In the event of malfunctions in the device due to errors caused by the factory that occur within the warranty period, the consumer is entitled to free repair of the device defects by means of warranty repair by the manufacturer.

The warranty repair includes, in particular, work to remedy defects in the operation of the device in order to ensure that the device is used as intended within the warranty period.

Defects are remedied by replacing or repairing the defective parts or units of the device.

### **The warranty service does not include:**

- regular technical maintenance
- Assembly / disassembly of the device
- Set up the device

For warranty repairs, the consumer must present the device, the operating instructions with the date of purchase and proof of payment as confirmation of the purchase.

The model of the device presented must match the model specified in the operating instructions. Contact the seller of the device for warranty service.

### **The guarantee does not apply in the following cases:**

- The consumer does not submit the fan completely, as stated in the operating instructions, including the components of the device dismantled by the consumer.
- Incompatibility of the model or brand of the device with the information on the packaging and in the operating instructions.
- Failure to timely technical maintenance of the device by the consumer.
- In the event of external damage to the housing and internal units (except external

Changes to the device that are necessary for assembly).

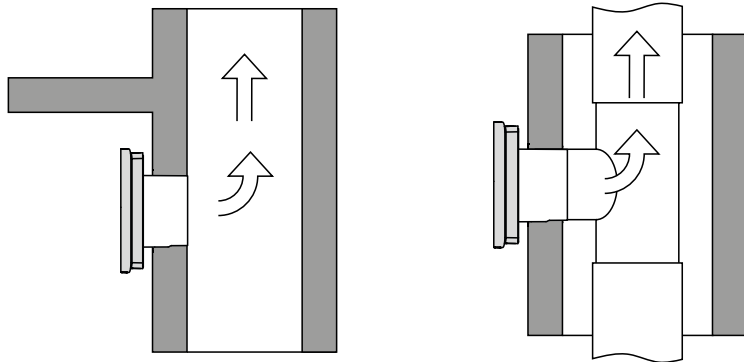
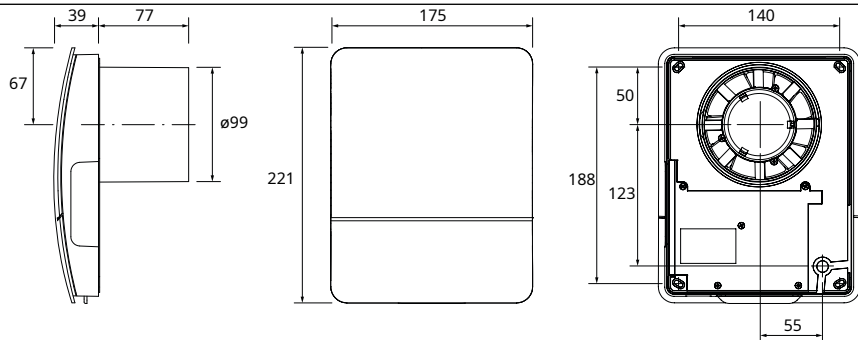
- Changes to the construction of the device or technical changes to the device.
- Replacement and use of units or parts that are not intended by the manufacturer.
- Inappropriate use of the device.
- Violation of the assembly instructions for the device by the consumer.
- Violation of the regulations for controlling the device by the consumer.
- Connection of the device to a power supply system with a voltage other than that specified in the operating instructions.
- Failure of the device as a result of voltage jumps in the power grid.
- Carrying out independent repairs to the device by unauthorized persons.
- Repairs to the device by persons who are not authorized by the manufacturer.
- The device's warranty period has expired.
- Violation of applicable regulations for the transport of the device by the consumer.
- Violation of the regulations on the storage of the device by the consumer.
- Unlawful acts by third parties in relation to the device.
- Failure of the device as a result of force majeure (fire, flood, earthquake, war, military action of any kind, blockades).
- Missing seals, if such are provided for in the operating instructions.
- Failure to present the operating instructions with the specified date of purchase.
- Lack of proof of purchase with the date of purchase, which confirms the purchase.

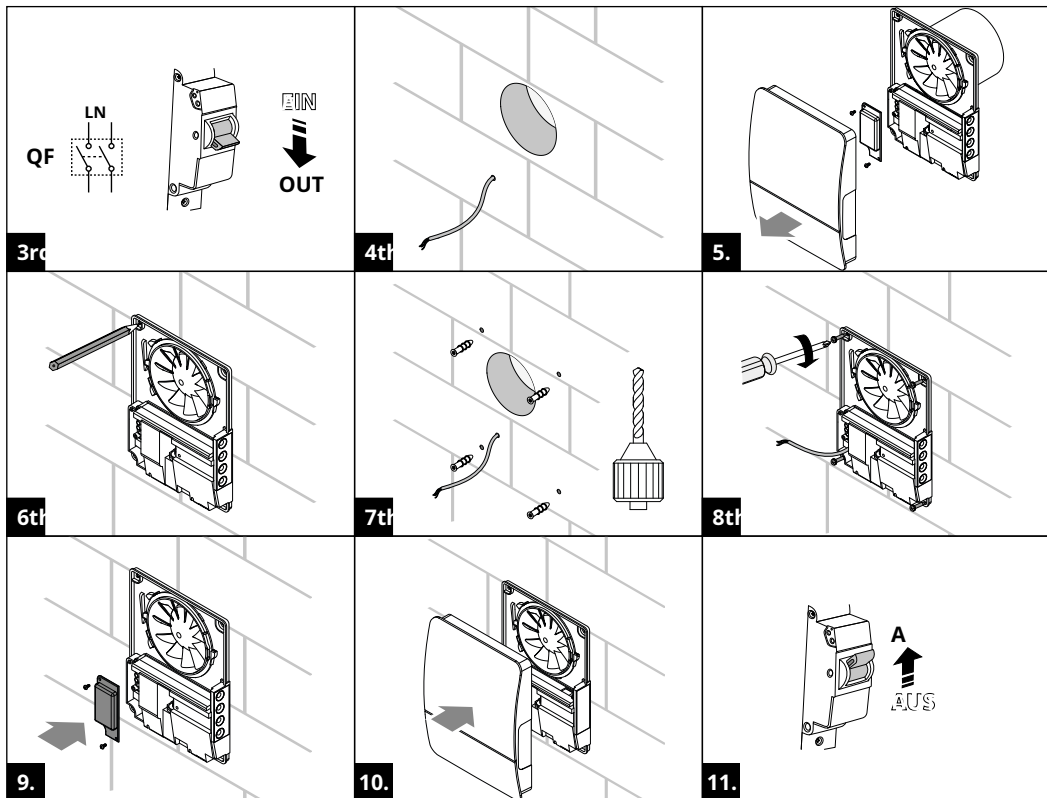


**MEET THE PRESENT OPERATING REQUIREMENTS IN ORDER TO PROPERLY  
TO ENSURE FUNCTION AND A LONG SERVICE LIFE OF THE DEVICE.**

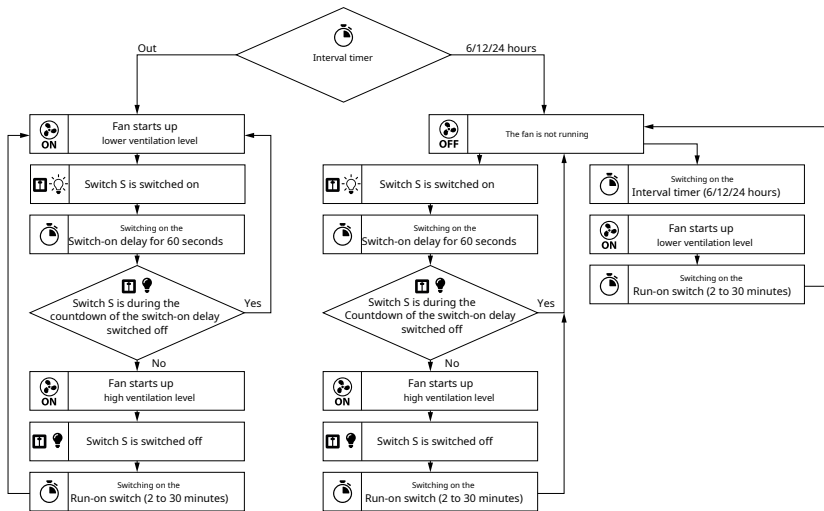
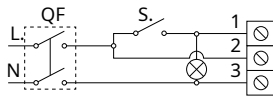
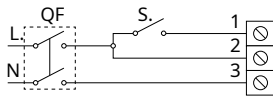


**THE WARRANTY CLAIMS CAN ONLY BE MADE IF THE DEVICE, A PROOF OF  
PURCHASE AND THE OPERATING INSTRUCTIONS NOTING THE DATE OF PURCHASE  
IS, PRESENT.**

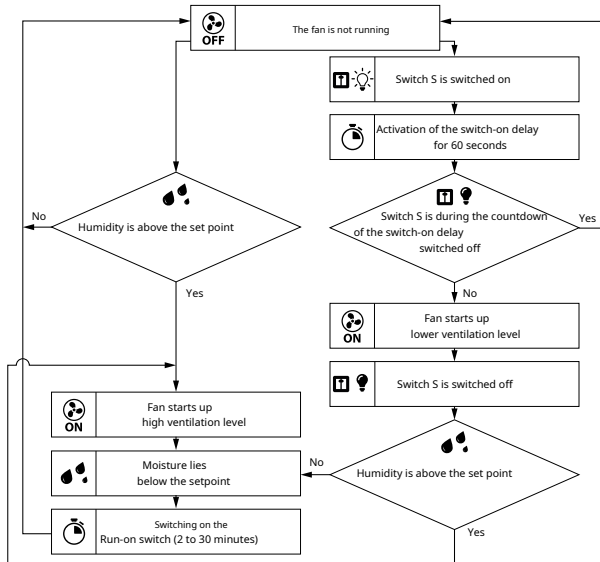
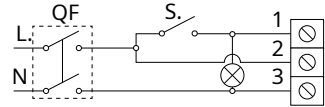
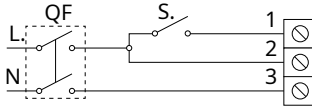


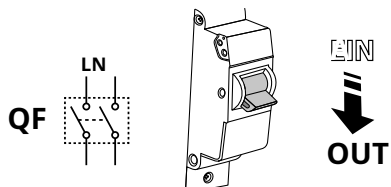


# 100VAIRT

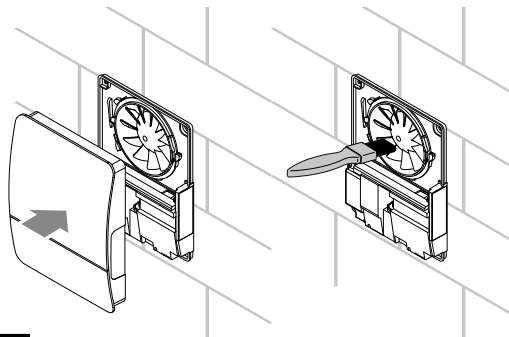


### 100VAIRTH

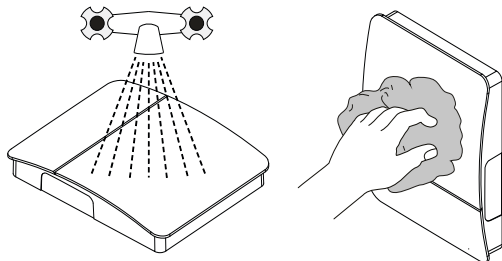




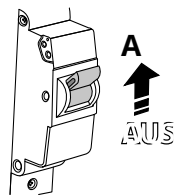
14t



15t



16.



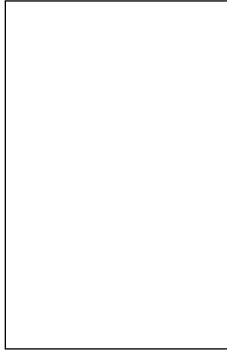
17t



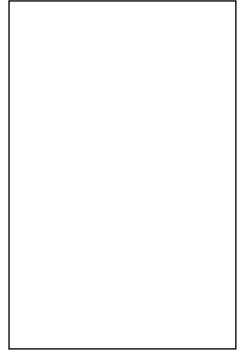




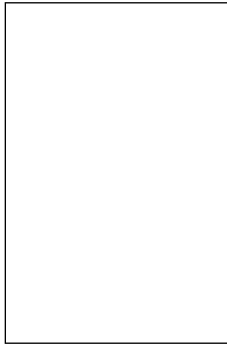
Certification mark

A large, empty rectangular box with a thin black border, intended for a certification mark.

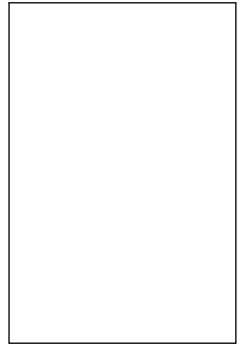
Sold by  
(Name and stamp of the dealer)

A large, empty rectangular box with a thin black border, intended for the name and stamp of the dealer.

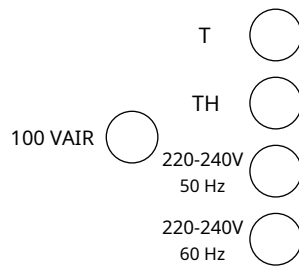
manufacturing date

A large, empty rectangular box with a thin black border, intended for the manufacturing date.

Date of sale

A large, empty rectangular box with a thin black border, intended for the date of sale.

ACCEPTANCE PROTOCOL



The fan is recognized as operational